

MACH, NEC, Birmingham
7-11 April 2014
Hall 5, SmartHub 5660

Edgecam is the first CAD/CAM platform to integrate Sandvik Coromant Adveon™ Tool Library

Launched at MACH 2014, Edgecam with integrated Adveon functionality saves set-up time and improves productivity and security in milling operations

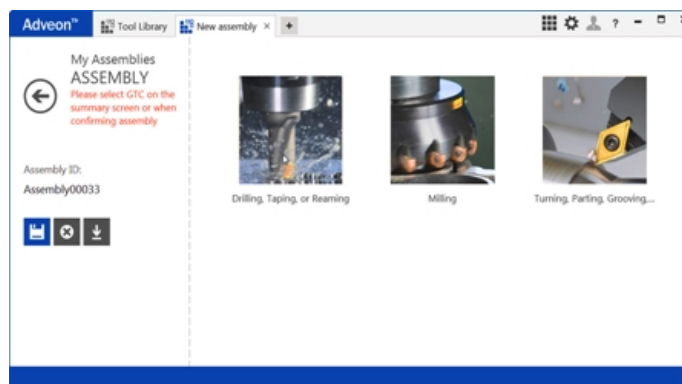


Image caption: Edgecam integrated Sandvik Coromant's Adveon™ Tool Library into their CAD/CAM systems and thereby offering access to easy-to-use and faster CAD/CAM programming.

Cutting tool and tooling systems supplier Sandvik Coromant has announced that CAD/CAM software specialist Edgecam is the first company to integrate the Sandvik Coromant Adveon™ Tool Library. Built into Edgecam's 2014 R2 software release, Adveon will help customers to further improve machining productivity and security, and saves time during machine set-up.

Edgecam is a market-leading CAD/CAM system for CNC part programming that supports a wide variety of milling, turning and mill-turn machining requirements including 3D milling and multi-axis operations. The platform combines ease-of-use with sophisticated toolpath generation and is used globally within a multitude of industries.

The integration provides customers with a single source of data for multiple CNC systems. The library allows the rapid building of tooling databases and ensures automatic access to 3D CAD models for accurate simulation and visualisation. The engineer's input is reduced, improving both consistency and quality of data.

By offering a standardized methodology for cutting tool suppliers to deliver digital tool data to customers, Adveon simplifies and speeds CAD/CAM programming. Support for the ISO 13399 cutting tool data standard allows selection of tools from any supplier and assures the accuracy of the geometrical information. Customers can develop their own libraries, quickly build tool assemblies and see immediate results in 2D and 3D.

Klas Forsström president of Sandvik Coromant comments: "Pressure to reduce time from design to production combined with the ever-increasing complexity of tools makes rapid access to accurate

and current tool data more critical than ever. Companies can no longer afford to rely on manual data entry and operators need a single tool library that can manage tools from multiple manufacturers. Adveon has been designed from the 'ground up' to address these challenges."

Edgecam General Manager Raf Lobato says: "Integration of the Adveon tool library into the market-leading Edgecam CAD/CAM system will help customers boost productivity and security, especially in three- to five-axis manufacturing operations. Adveon will be included in all new Edgecam licences and will provide a single tool library for multiple applications." Adveon will be free with Edgecam for 2014.

Visitors to MACH 2014 will find demonstrations of the Edgecam platform with integrated Adveon tool library on the Edgecam stand (Hall 4: Stand 4426). Consultants will also be on hand to answer any questions regarding the latest version of the software.

For further information please visit www.edgecam.com/adveon-edgecam or www.sandvik.coromant.com/adveon

About Sandvik Coromant

[Sandvik Coromant](http://www.sandvik.coromant.com) is a global leading supplier of cutting tools, tooling solutions and know-how to the metalworking industry. With extensive investments in research and development we create unique innovations and set new productivity standards together with our customers. These include the world's major automotive, aerospace and energy industries. Sandvik Coromant has 8000 employees and is represented in 130 countries. We are part of the business area Sandvik Machining Solutions within the global industrial group [Sandvik](http://www.sandvik.com).

For more information visit the website at www.sandvik.coromant.com.

About Edgecam

Edgecam is a market leading production CAM solution, combining the power of sophisticated toolpath generation with seamless CAD integration. Used globally within a multitude of industries, Edgecam consistently produces high quality and reliable toolpaths. With unparalleled ease of use, it's the only CAD/CAM system you'll need for 3D Milling, Mill-Turn Machining and Multi Axis Machining. Edgecam utilises your in house knowledge and experience to drive the CAM process with automation tools to suit different applications - allowing you to maintain your competitive edge

For more information visit the website at www.edgecam.com

– End –

Contact Details:

Nikki Stokes
PR & Advertising, EMEA
Sandvik Coromant
Tel: +44 (0) 121 504 5422
Email: nikki.stokes@sandvik.com
Website: www.sandvik.coromant.com

Simon Flatt
Account Director
Pinnacle Marketing Communications, Ltd
Tel: +44 (0) 208 869 9229
Email: simon.flatt@pinnaclemarcom.com
Web: www.pinnacle-marketing.com



Please consider the environment before printing this press release.

Ref: SAN756A